



INNOVATION *for growing*

2020 will remain a special year and due to the current situation, our next catalogue will only be released in January 2021.

In the meantime, we continue to innovate and develop appropriate solutions to the evolutions of our industry.

You will find in this leaflet an overview both of our newest products, and of the development of our ranges of injected and thermoformed pots in order to address environmental issues.

More than ever, SOPARCO is working towards a more eco-responsible approach in the context of the circular economy.

Think Green ... Think Soparco



OUR RECYCLED, DETECTABLE AND RECYCLABLE THERMOFORMED RANGE

Thermoformed Duo® pots, ready for the circular economy

SOPARCO goes ahead with the evolution of its product range in order to comply with the environmental requirements of various European countries.

Today, our Duo® thermoformed containers are produced from polypropylene which is 100% recycled. We have removed the coloured pots with black inside from our Duo® range to only produce the "tone in tone" version.

This enables detection via NIR optical sorting. (NIR : Near Infra Red detection in waste-sorting equipments). The detected pots can then be recycled again.



The following colours made from recycled and recyclable polypropylene and Cyclos-certified are kept in stock :



Terracotta 27



White 05



Taupe FS



Grey WG



Green EB



Yellow 23



Red AB



Fuchsia A1



Green 78



Pine green 54



Blue 11



Purple B1





OUR RECYCLED, DETECTABLE AND CERTIFIED INJECTED RANGE

Various ranges of recyclable and certified colours

SOPARCO continues its research to progressively reduce the use of virgin plastic material in the manufacturing of pots. Today over 80% of our production is already made out of recycled material. We have reliable sources both of Post-Consumer Recycled material (PCR) and of Post-Industrial Recycled material (PIR) which are also NIR-detectable and certified for recyclability by Cyclos.



We particularly keep on stock a complete range of recycled/recyclable and Cyclos-certified products in PCR material. These "recycled – detectable – recyclable" materials are kept in stock for the SX and square-round ranges of containers, as well as Decor Bowls and some window-boxes.



* When stock runs out



We do nevertheless keep the black nursery containers in our catalogue. Their quality, durability and UV-resistance are well-adapted for the use in nurseries and they are also made from recycled plastics.



All our masterbatches have been upgraded to become detectable and recyclable and many are already Cyclos-certified.

Consult us !

Do not hesitate to ask our team for more information !



Soparco is a member of Recoup



OUR NEW PRODUCTS

EOLE 23 : AN ECO-FRIENDLY BOWL

Eole 23 combines the perfect design for plant production (three-tier base and optimal drainage) with an eco-friendly conception through lightweight while maintaining a good rigidity.

Ø 23 cm



Product code : 3223

The loading of the shelf is optimised with 15 bowls/ CC shelf

Available in 4 Cyclos-certified colours



Taupe
WE



Grey
WD

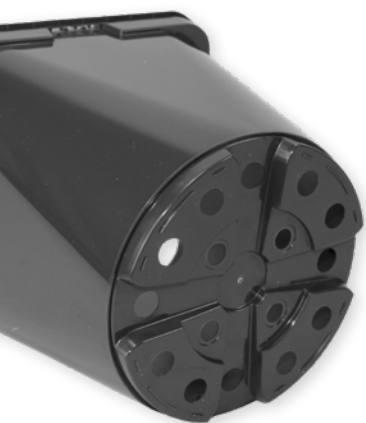


Terracotta
17



Pine Green
54

NEW 3 L V M SQUARE ROUND CONTAINER, FOR USE WITH BARK-SPREADING MACHINES



SOPARCO holds the largest range of "square-round containers" on the market.

The new 3L VM completes the collection of "square-round" pots specially designed with a round base in order to be compatible with the use of bark-spreading machines.

The range is now available in 2, 3 and 4L.

This container saves up to 14% space compared to a 3L round pots.



Download video



Product codes :
2L / 3L / 4L
2229 / 2244 / 2267

SAVE TIME WITH OUR 13 CM SOPAFIX V

We have again enlarged and improved our Sopafix® range with a new version of 13 cm Sopafix designed for a quick and easy destacking thanks to the V-system.

This feature clearly saves time when placing the Sopafix on the pot.

Its narrow top diameter makes it easier to place the pots in trays.

Available in boxes and box-pallets



Product code : 3917



Download video

ADDITION TO OUR SX RANGE : SXC 2.5 L G2

A 2.5L container has been added to our SX range.

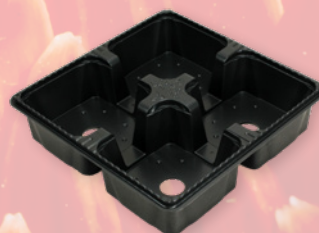


Product code : 6236

Available in black and terracotta

NEW TRAY FOR 4 POTS OF 15 X 15 CM POTS

SOPARCO continues to develop its range of transport trays. This product is designed for use with the 3L high shape square round container (ref. 2247).



Product code : 8739